

特殊用途端子之：电缆T接线端子  
Specialty purpose terminals: T-connection terminal blocks

上海向开电气有限公司  
Shanghai XiangKai Electric Co.,Ltd



CE CQC ISO-9001:2008

# 公司简介 Company Introduction

上海向开电气有限公司创建于上世纪七十年代，是一家集技术研发、生产制造、销售服务为一体的科技型企业。

经数十年生产经营传承，公司研发实力雄厚，新产品层出不穷。上世纪末公司在特殊用途端子领域进行了深度研发，经十多年的发展，已成为该领域的引领者，取得了骄人的业绩。目前已经形成了两大系列：大电流接线/分线端子和电缆T接端子。所研发的产品全部拥有自主知识产权，获得十多项国家专利。其中的XK2系列多用途端子获得国家发明专利（ZL200910049966.3），该产品技术国际领先，已远销至欧洲、美洲和大洋洲，并为国际知名企业配套选用；电缆“T”接端子的问世不仅填补了国内空白，而且迅速成为了建筑电气行业性价比最高的电缆分线（T型连接）产品之一，投产十多年以来，已先后为首都机场、浦东机场、奥运工程、世博场馆、高铁工程等上千项国家级重点工程所选用。目前该产品已发展为四大系列，其中一款也获得发明专利（ZL201010190790.6）。产品先后获得建设部《全国住宅小区与智能建筑推荐产品》和《政府保障性电气工程推荐供应商》等称号。

企业已通过ISO-9001质量体系认证。产品先后通过了CE、CQC等认证。

我们的宗旨是为海内外客户提供满意的产品和周到的服务。欢迎选用“向开”牌电气产品。

Shanghai XiangKai Electric Co., Ltd is a technology-driven electrical components design and manufacture company, headquarter in Shanghai, China. Our mission is to provide high quality electrical products and service to our worldwide customer-base.

Entering the 21st century, Shanghai XiangKai Electric Co., Ltd has started our development in the area of specialty terminal blocks and become the segment leader in China. We have published multiple patents and rolled out corresponding new products every year in the past decade. Our high current terminal blocks, multipurpose blocks and separators has been chosen by Siemens, Moeller Electric, Rockwell Automation, ABB, Schneider Electric, and Himinsa in their systems. Our T-connection blocks have been proved by many customers as the most cost-effective and reliable product in the market. They are recommended by the China Construction Bureau and used in many Chinese national projects such as Pudong Airport, Beijing Airport, Beijing Olympics, Shanghai World Expo and High-speed Rail constructions.

Our product lines are backed up by a strong R&D and support team to develop best products tailored to customer needs. Shanghai XiangKai Electric Co is ISO-9001 certified and our products have passed, CE, CQC certification.



北京富卓花园



上海公共卫生中心



## CONTENTS 产品目录

- |         |  |
|---------|--|
| A1-A6   | JXT1系列 T接端子（基本型）<br>JXT1 T-connection terminal blocks (basic)      |
| A7-A12  | JXT2系列 T接端子（防护型）<br>JXT2 T-connection terminal blocks (protective) |
| A13-A16 | XKT3系列 T接端子（密封型）<br>XKT3 T-connection terminal blocks (sealed)     |
| A17-A19 | XKT4系列 T接端子（经济型）<br>XKT4 T-connection terminal blocks (economical) |
| A20     | TD28等电位接线盒<br>TD28 Junction box                                    |

### 工程案例 / Case



湖南湘雅医院



上海浦东华山医院



上海浦东机场

—— 演绎接线新概念 引领端子新潮流 ——



## JXT1系列 T接端子 (基本型)

### JXT1 T-connection terminal blocks (basic)

JXT1系列“T”接端子及电缆“T”接箱主要适用于建筑、工业电气设备中作主电缆(干线)不能切断时的“T”形分线连接用。以往导线的“T”形连接通常采用剥开主干线绝缘、将分支导线绕接在主干线上、包上绝缘包布的方法。这种接线方法最直接的危害是可靠性差、接点电阻大,极易引发电气事故;而且当分支导线截面 $>10\text{mm}^2$ 时靠手工绕接就难以操作。如今一种既可靠、又便捷、使用成本又低的用于大截面的干线“T”形连接的端子---JXT1系列“T”接端子的问世解决了这一难题。通过不同形状导线夹的相互组合,可形成双层接线,下层接入主干线,上层接入分支线,形成干线不断的“T”形连接。

- 实现不切断主干线时的现场分支连接;
- 符合IEC60947-7-1, GB14048.7.1标准;
- 高强度绝缘材料,机械强度高,阻燃等级符合UL 94 V-0级;
- 现场接线时不用对线端作特殊处理,不用特殊工具,使用便捷,节省施工工时;
- 电气性能优异:接点(电)压降:1.98mV;通过 $120\text{A}/\text{mm}^2/1\text{s}$ 的短路电流强度试验;
- 结构独特:线夹对导线呈包容咬合状,与导线接触面积大,辅之以高强度螺栓压接,防松抗震;
- 同类方案相比,节约50%~70%工程费用,性价比高。

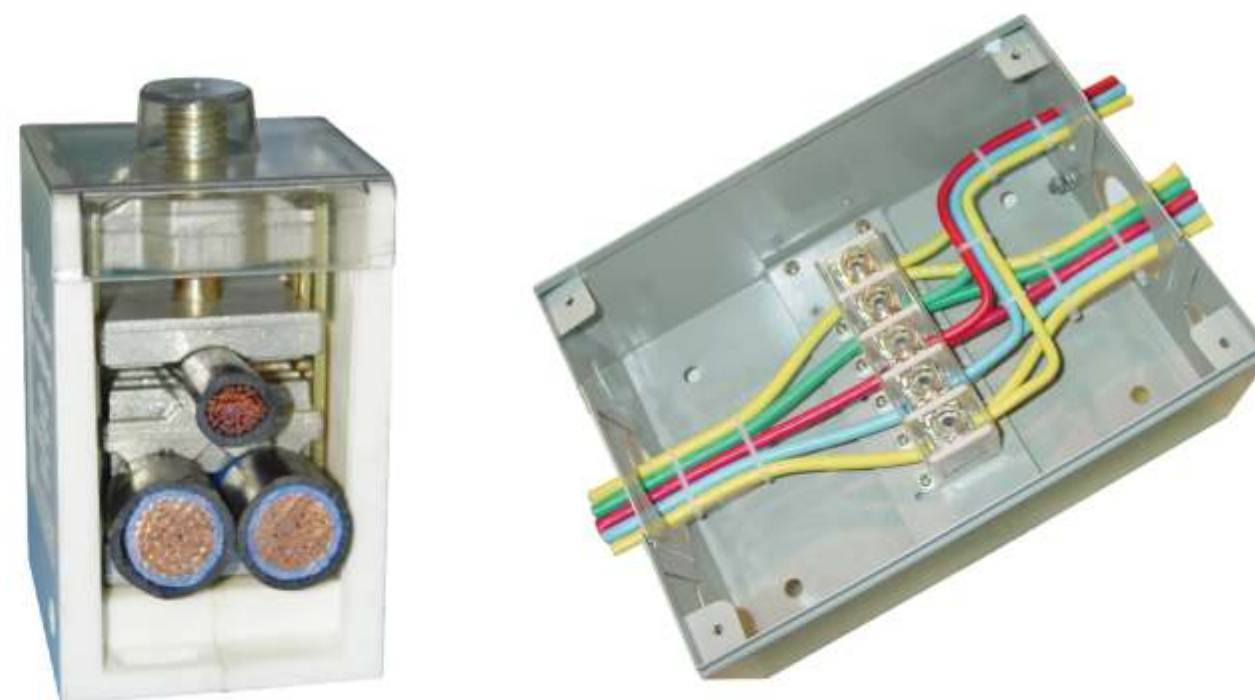


JXT1 series is a revolutionary solution for power distribution and branching. It does not break the main power line cable when connecting branch with “T” type connection. JXT1’s unique internal structure ensures high-reliability and low-resistance connection, as well as easy wiring.

The following list summarizes the advantage of JXT1 model:

- Saves 50%-70% cost comparing to traditional ways using busbar and branch cables.
- Provides T-connection without breaking the main cable.
- Accepts both copper and aluminum cables.
- Molded with anti-aging, non-flammable, heat & impact resistance material, passed  $120\text{A}/\text{mm}^2$  short-circuits stress test and UL 94 V-0 flammability test.
- Low resistance contact points, voltage loss is only 1.98 mV, 70% lower than IEC standard.
- Easy installation with small turnaround room required (e.g. underground electrical channel).
- Low installation torque.
- Enhanced enclosure and protection for outdoor electrical applications.
- Fit for IEC60947-7-1.

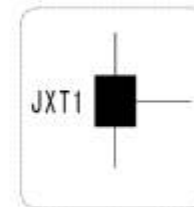
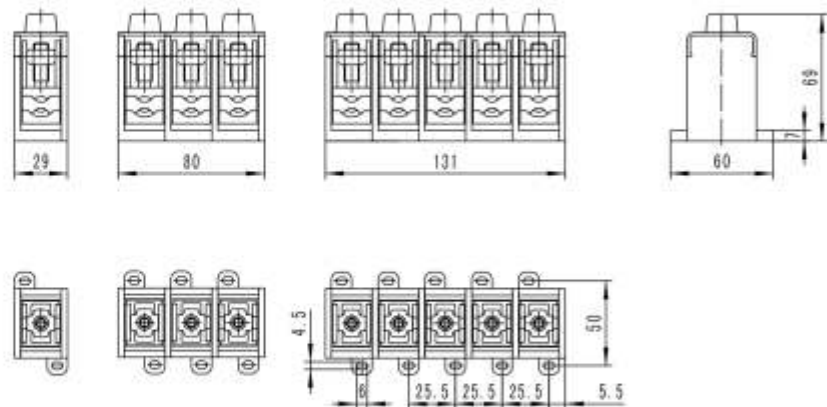
专利号: 00264382.0 00349409.8  
Patent No:






**JXT1-50(35)**
**JXT1-50(35)B**

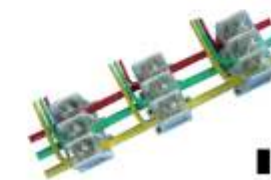
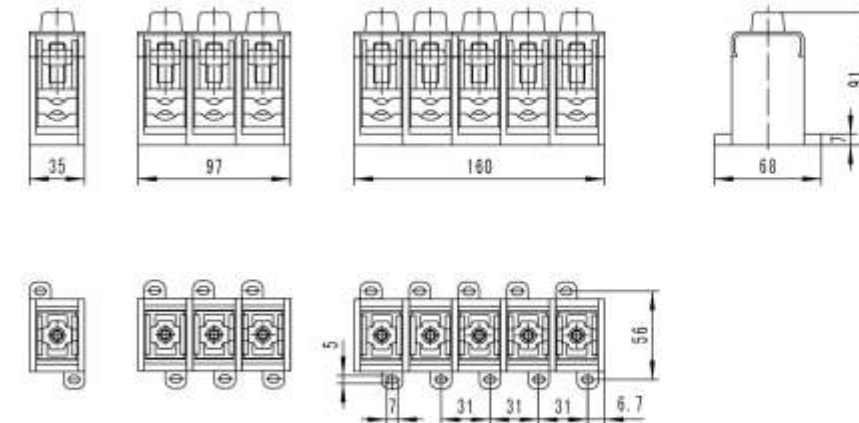
接线型式 Wiring type		一路干线, 一路分支 one main line, one branching line	一路干线, 二路分支 one main line, two branching line
电流 Current	A	150	150
电压 Voltage	V	1000	1000
主干线截面: Main line cross-section	mm <sup>2</sup>	10~50	10~50
分支线截面: Branching line cross-section	mm <sup>2</sup>	6~35	2×6~16
压线螺钉 Screw		 4mm M8	 4mm M8
扭矩: Torque	N·m	12	12
剥线长度: Strip length	mm	25/25	25/25
箱体参考尺寸 Box size reference	mm	250×180×120	250×180×120
安装螺钉 Mounting screw		M4	M4
极数: Poles		1P/3P/5P	1P/3P/5P
订货号 Order No		XK01111 / XK01113 / XK01115	XK01121 / XK01123 / XK01125



设计标注

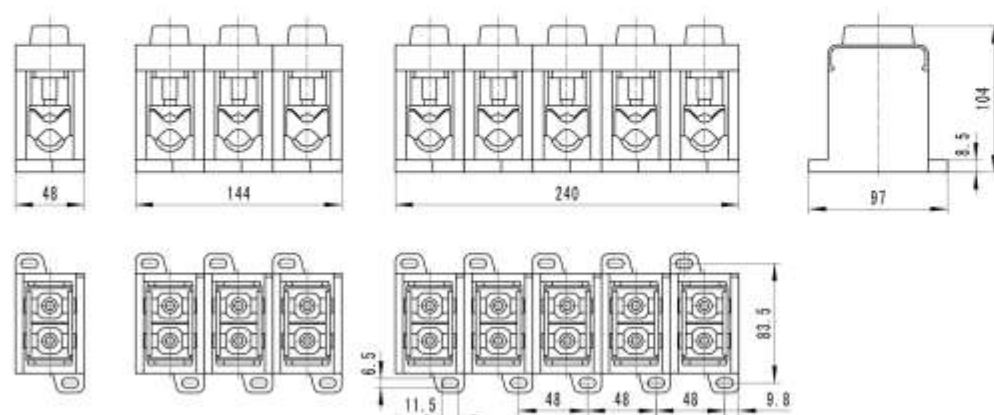

**JXT1-95(70)**
**JXT1-95(70)B**

接线型式 Wiring type		一路干线, 一路分支 one main line, one branching line	一路干线, 二路分支 one main line, two branching line
电流 Current	A	232	232
电压 Voltage	V	1000	1000
主干线截面: Main line cross-section	mm <sup>2</sup>	25~95	25~95
分支线截面: Branching line cross-section	mm <sup>2</sup>	10~70	2×10~35
压线螺钉 Screw		 5mm M10	 5mm M10
扭矩: Torque	N·m	20	20
剥线长度: Strip length	mm	30/30	30/30
箱体参考尺寸 Box size reference	mm	450×250×130	450×250×130
安装螺钉 Mounting screw		M5	M5
极数: Poles		1P/3P/5P	1P/3P/5P
订货号 Order No		XK01211 / XK01213 / XK01215	XK01221 / XK01223 / XK01225

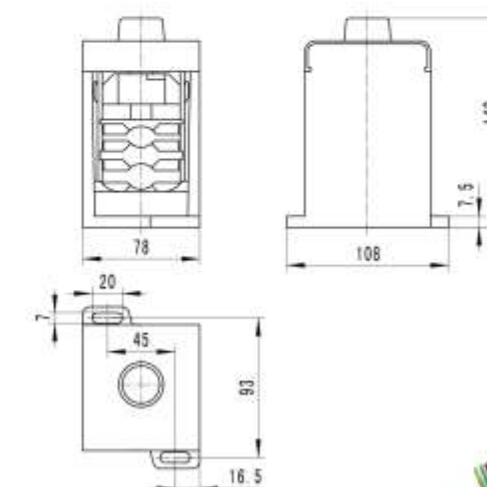



**JXT1-185(150)**
**JXT1-185(150)B**

接线型式 Wiring type		一路干线, 一路分支 one main line, one branching line	一路干线, 二路分支 one main line, two branching line
电流 Current	A	353	353
电压 Voltage	V	1000	1000
主干线截面: Main line cross-section	mm <sup>2</sup>	35~185	35~185
分支线截面: Branching line cross-section	mm <sup>2</sup>	10~150	2×10~150
压线螺钉 Screw		 2×M10	 2×M10
扭矩: Torque	N·m	20	20
剥线长度: Strip length	mm	50/20	50/20
箱体参考尺寸 Box size reference	mm	600×300×160	600×300×160
安装螺钉 Mounting screw		M6	M6
极数: Poles		1P	1P
订货号 Order No		XK01311	XK01321


**JXT1-240×2**
**JXT1-300(240)**

接线型式 Wiring type		二路干线, 一路分支 two main line, one branching line	一路干线, 一路分支 one main line, one branching line
电流 Current	A	800	630
电压 Voltage	V	1000	1000
主干线截面: Main line cross-section	mm <sup>2</sup>	2×50~240	70~300
分支线截面: Branching line cross-section	mm <sup>2</sup>	35~240	50~240
压线螺钉 Screw		 M16	 M16
扭矩: Torque	N·m	50	50
剥线长度: Strip length	mm	45/45	45/45
箱体参考尺寸 Box size reference	mm	750×500×250	750×500×250
安装螺钉 Mounting screw		M6	M6
极数: Poles		1P	1P
订货号 Order No		XK01411	XK01511





## JXT2系列 T接端子 (防护型)

### JXT2 T-connection terminal blocks (protective)

JXT2系列“T”接端子主要适用于建筑、工业电气设备中作主电缆(干线)不能切断时的“T”形分线连接用。该产品在继承了JXT1系列“T”接端子的所有优点的基础上突出了其安全防护性能,同时从产品外形到内在结构上进行更精心的突破性的工业设计,使其不仅具有纤小美观的外形,同时更具有可靠紧凑的内部结构。该产品的推出在大大提高了其性能价格比的同时也拓展了其使用范围,给设计师们提供了足够的想象空间,是电缆“T”接端子产品领域里的一朵奇葩。



- 实现不切断主干线时的现场分支连接;
- 符合IEC60947-7-1, GB14048.7.1标准;
- 高强度绝缘材料,机械强度高,阻燃等级符合UL 94 V-0级;
- 外形美观坚固,防护等级符合IEC 60529 IP20,使用更安全;
- 现场接线时不用对线端作特殊处理,不用特殊工具,使用便捷,节省施工工时;
- 电气性能优异:接点(电)压降:1.98mV;通过120A/mm<sup>2</sup>/1s的短路电流强度试验;
- 结构独特:线夹对导线呈包容咬合状与导线接触面积大,辅之以高强度螺栓压接,防松抗震。

JXT2 “T” series is evolved from its predecessor JXT1. JXT2's unique internal structure ensures high-reliability and low-resistance connection, as well as easy wiring. In addition, JXT2 has a more compact design and provide better electrical safety and protection, which expands flexibility and possibility for electrical designers in architecture and industrial appliances.

The following list summarizes the advantage of JXT2 model:

- Better protection than JXT1 models.
- Compact design that fits minimal installation space.
- Save 50%-70% cost comparing to traditional ways using busbar and branch cables.
- Provides T-connection without breaking the main cable.
- Accepts both copper and aluminum cables.
- Molded with anti-aging, non-flammable, heat & impact resistance material, passed 120A/mm<sup>2</sup> short-circuits stress test and UL 94 V-0 flammability test.
- Low resistance contact points, voltage loss is only 1.98 mV, 70% lower than IEC standard.
- Easy installation with small turnaround room required (e.g. underground electrical channel).
- Low installation torque.
- Enhanced enclosure and protection for outdoor electrical applications.
- Fit for IEC60947-7-1

专利号: 200430019257.9  
Patent No:

## 安装步骤 / Installation steps



1. 打开防护罩  
Open the protective cover



2. 拧松螺钉后取出导电体,装上主干线后,再装上导电体  
Reverse the screws, take out the conductive metal, install the main cable, and re-attach the conductive metal



3. 盖上防护罩并拧紧安装螺钉  
Re-attach the protective cover, and tighten the mounting screws



4. 揭开透明盖拧松螺钉,装入分支线后拧紧螺钉,盖上透明盖即可  
Pop the transparent top cover, loosen position screw, insert branch cable, tighten position screw, and finish by re-attaching the top cover

## 安装类型 / Installation style



● 直接吊在线缆上  
Free hanging (In-line)



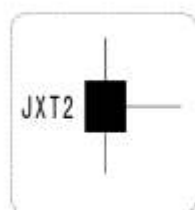
● 安装在底板或墙壁上,仅需呈对角线安装螺钉 (2 supporting point) diagonally to base-plate



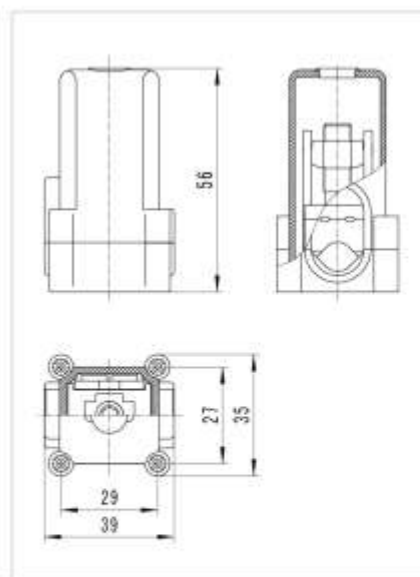
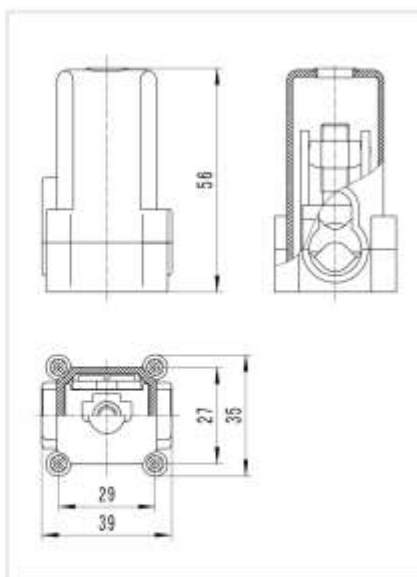



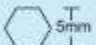


**JXT2-50(35)**
**JXT2-50(35)B**

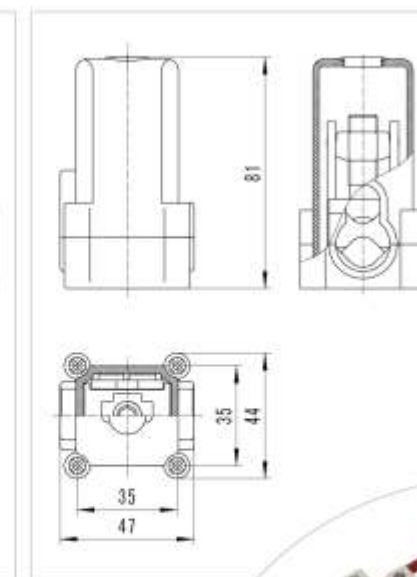
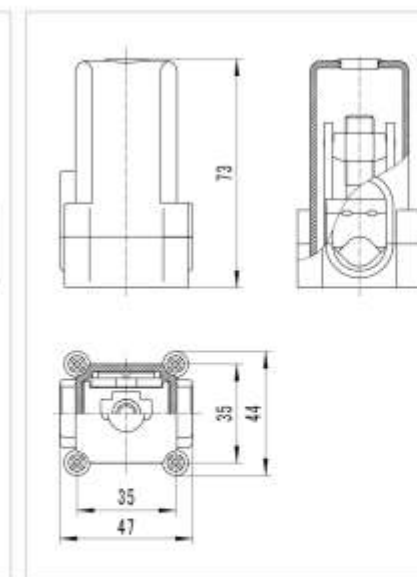
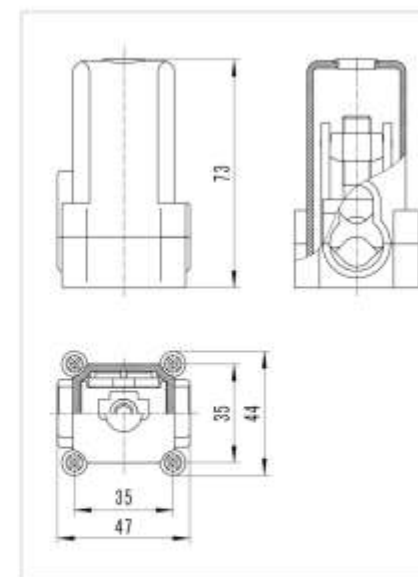
接线型式 Wiring type		一路干线, 一路分支 one main line, one branching line	一路干线, 二路分支 one main line, two branching line
电流 Current	A	150	150
电压 Voltage	V	1000	1000
主干线截面: Main line cross-section	mm <sup>2</sup>	10~50	10~50
分支线截面: Branching line cross-section	mm <sup>2</sup>	6~35	2×6~16
压线螺钉 Screw		 M8	 M8
扭矩: Torque	N·m	12	12
剥线长度: Strip length	mm	25/25	25/25
包装 Pack		25	25
订货号 Order No		XK02111	XK02121



设计标注

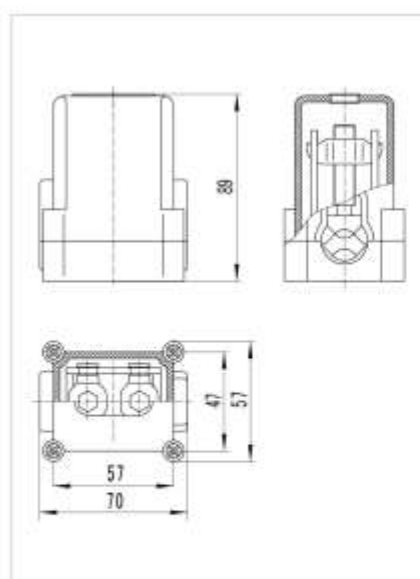
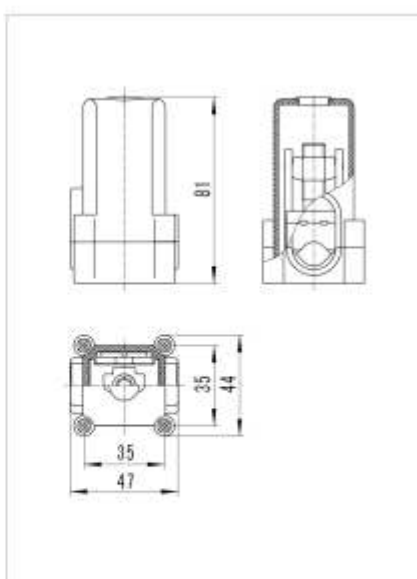

**JXT2-70(50)**
**JXT2-70(50)B**
**JXT2-95(70)**


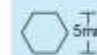

一路干线, 一路分支 one main line, one branching line	一路干线, 二路分支 one main line, two branching line	一路干线, 一路分支 one main line, one branching line
192	192	232
1000	1000	1000
25~70	25~70	25~95
10~50	2×10~35	10~70
 M10	 M10	 M10
20	20	20
30/30	30/30	30/30
15	15	15
XK02211	XK02221	XK02311

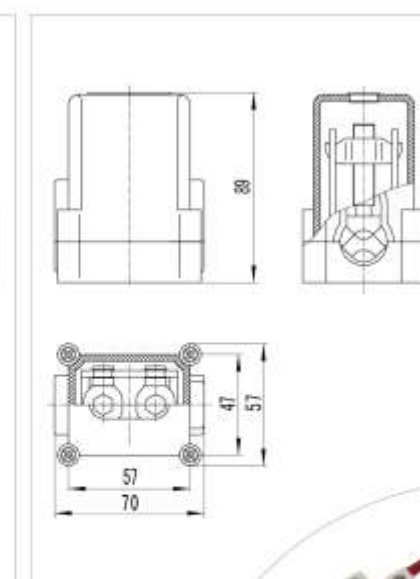
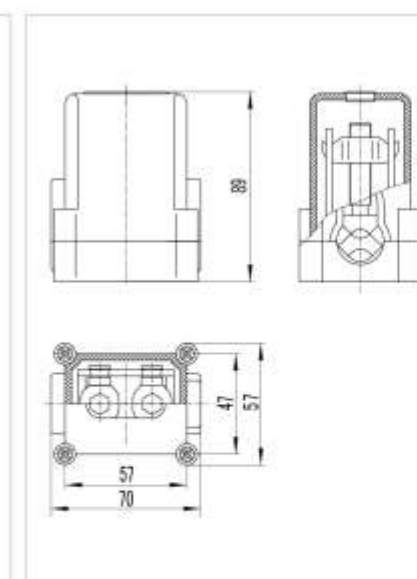
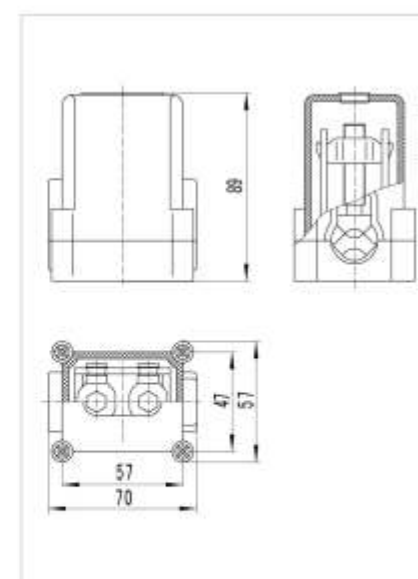



**JXT2-95(70)B**
**JXT2-185(150)**

接线型式 Wiring type		一路干线, 二路分支 one main line, two branching line	一路干线, 一路分支 one main line, one branching line
电流 Current	A	232	353
电压 Voltage	V	1000	1000
主干线截面: Main line cross-section	mm <sup>2</sup>	25~95	35~185
分支线截面: Branching line cross-section	mm <sup>2</sup>	2×10~35	10~150
压线螺钉 Screw		 5mm M10	 5mm 2×M10
扭矩: Torque	N·m	20	20
剥线长度: Strip length	mm	30/30	50/50
包装 Pack		15	8
订货号 Order No		XK02321	XK02411


**JXT2-185(150)B**
**JXT2-240(95)**
**JXT2-240(95)B**

一路干线, 二路分支 one main line, two branching line	一路干线, 一路分支 one main line, one branching line	一路干线, 二路分支 one main line, two branching line
353	415	415
1000	1000	1000
35~185	35~240	35~240
2×10~150	10~95	2×10~95
 5mm 2×M10	 5mm 2×M10	 5mm 2×M10
20	20	20
50/25	50/50	50/25
8	8	8
XK02411	XK02511	XK02511





## XKT3系列 T接端子 (密封型)

### XKT3 T-connection terminal blocks (sealed)

XKT3系列电缆“T”接端子主要适用于建筑、工业电气设备及其它特殊场合中作主电缆(干线)不能切断时的“T”形分线连接用。该产品在继承了JXT2系列“T”接端子的所有优点的基础上突出了其密封性能,特殊设计的密封圈可满足各种规格截面电缆的线径匹配,其优异的防护性能大大拓展了其应用范围;同时在产品外形上进行更精心,更具突破性的工业设计,使其不仅具有纤小美观的外形,同时更具有可靠紧凑的内部结构。该产品的推出提升了产品的密封性能使其不仅可应用室内,同时在进行密封处理后更可应用在户外,电缆沟,地下空中等对防护有特殊要求的场合。

其应用范围;同时在产品外形上进行更精心,更具突破性的工业设计,使其不仅具有纤小美观的外形,同时更具有可靠紧凑的内部结构。该产品的推出提升了产品的密封性能使其不仅可应用室内,同时在进行密封处理后更可应用在户外,电缆沟,地下空中等对防护有特殊要求的场合。

- 实现不切断主干线时的现场分支连接;
- 符合IEC60947-7-1, GB14048.7.1标准;
- 高强度绝缘材料,机械强度高,阻燃等级符合UL 94 V-0级;
- 外形美观坚固,防护等级符合IEC 60529 IP54,经特殊密封处理防护等级可达IP68;
- 现场接线时不用对线端作特殊处理,不用特殊工具,使用便捷,节省施工工时;
- 结构独特:线夹对导线呈包容型犬牙交错结构,传导截面大、接触压力大、接点压降小,辅之以高强度螺栓压接,防松抗震。

XKT3 series is used for exposed branching connection without cutting the main power cable. It has the following advantages:

- Molded with anti-aging, non-flammable, heat & impact resistance material, passed UL 94 V-0 flammability test.
- Specially designed wire clamps provides large contact area and low contact resistance.
- IEC 60529 IP54 rated safety protection, Special order can reach IP68 compliance.
- No need to process the end of cable and no specialty tool needed.
- Fit for IEC60947-7-1.

专利号: 201010190790.6 201120267309.9 201130242041.9  
Patent No:

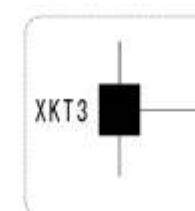


XKT3-25

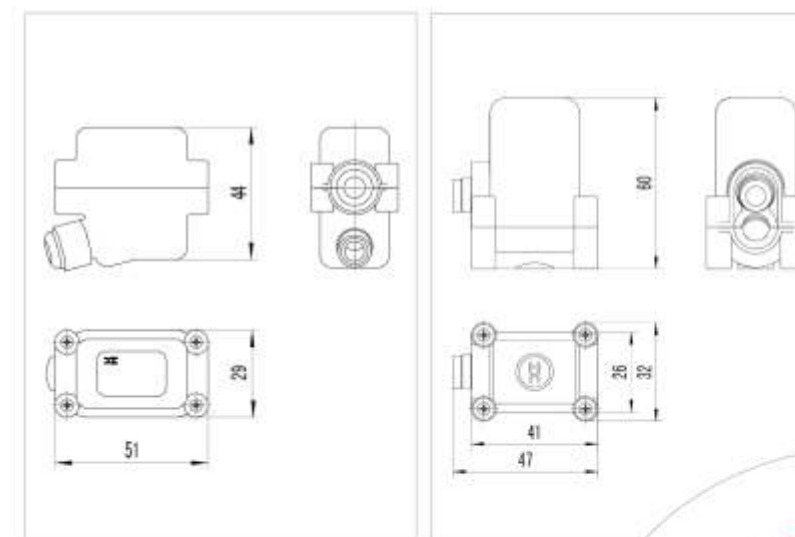


XKT3-50

接线型式 Wiring type	一路干线, 一路分支 one main line, one branching line	一路干线, 一路分支 one main line, one branching line
电流 Current	A	101
电压 Voltage	V	1000
主干线截面: Main line cross-section	mm <sup>2</sup>	10~25
分支线截面: Branching line cross-section	mm <sup>2</sup>	4~10
压线螺钉 Screw	M6	M8
扭矩: Torque	N·m	3
剥线长度: Strip length	mm	20/20
包装 Pack	20	20
订货号 Order No	XK03111	XK03211



设计标注





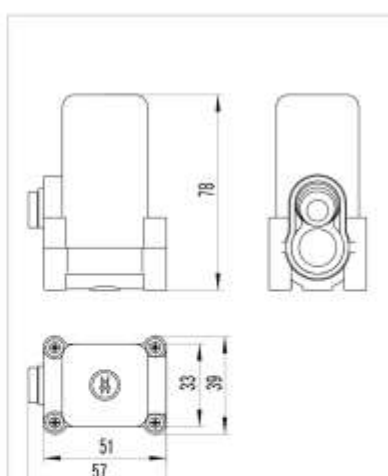
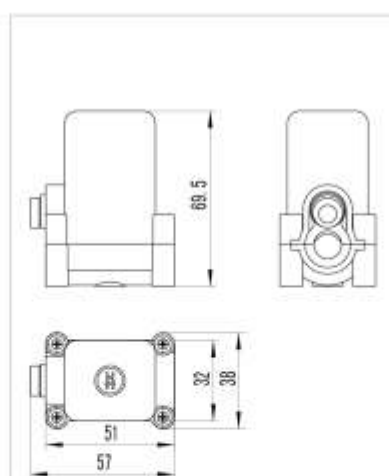


**XKT3-70**

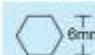


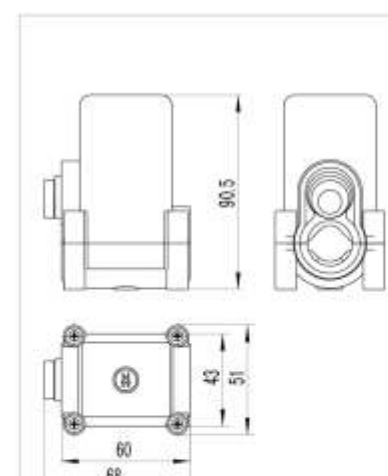
**XKT3-120**

接线型式 Wiring type		一路干线, 一路分支 one main line, one branching line	一路干线, 一路分支 one main line, one branching line
电流 Current	A	192	269
电压 Voltage	V	1000	1000
主干线截面: Main line cross-section	mm <sup>2</sup>	25~70	25~120
分支线截面: Branching line cross-section	mm <sup>2</sup>	10~50	10~95
压线螺钉 Screw		 M10	 M10
扭矩: Torque	N·m	10	10
剥线长度: Strip length	mm	30/30	30/30
包装 Pack		15	15
订货号 Order No		XK03311	XK03411

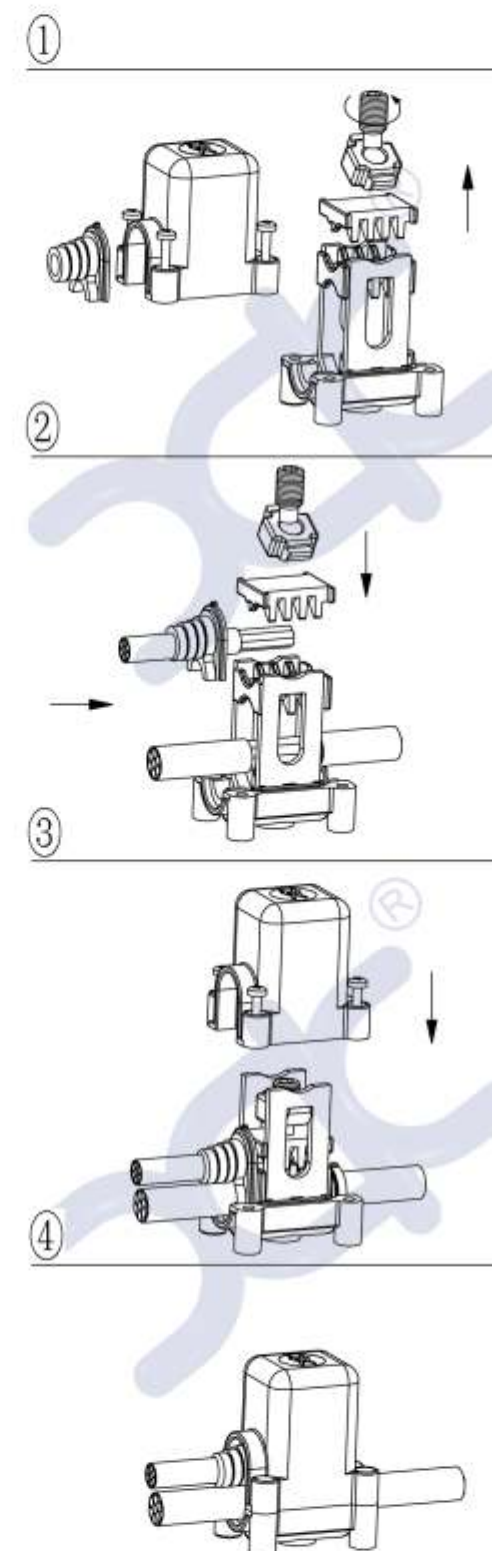


**XKT3-240**

一路干线, 一路分支 one main line, one branching line
415
1000
35~240
25~150
 M12
14
30/30
9
XK03511



安装步骤  
Installation steps





## XKT4系列 T接端子 (经济型)

XKT4 T-connection terminal blocks (economical)

XKT4系列电缆“T”接端子主要适用于建筑、工业电气设备及其它特殊场合中作主电缆(干线)不能切断时的“T”形分线连接用。该产品设计新颖,结构紧凑,性能可靠,性价比高。主要适用于主干线电缆截面 $120\text{mm}^2$ 以下的线槽布线方案中使用,也适用于电缆桥架等其它场合中使用。



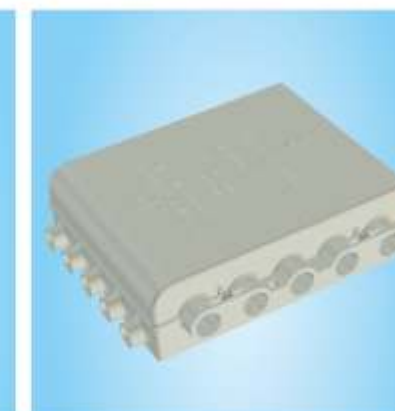
- 实现不切断主干线时的现场分支连接;
- 符合IEC60947-7-1, GB14048.7.1标准;
- 高强度绝缘材料, 机械强度高, 阻燃等级符合UL 94 V-0级;
- 外形美观坚固, 防护等级符合IEC 60529 IP30;
- 现场接线时不用对线端作特殊处理, 不用特殊工具, 使用便捷, 节省施工工时;
- 结构独特: 导电部件结构紧凑与导线接触面积大, 辅之以高强度螺栓压接, 防松抗震;
- 与线槽配合使用, 布线方案更经济。

XKT4 series is used for branching connection without cutting the main power cable.

It has the following advantages:

- Molded with anti-aging, non-flammable, heat & impact resistance material, passed UL 94 V-0 flammability test.
- Can be used together with trunking and save wiring cost significantly.
- Specially designed wire clamps provides large contact area and low contact resistance.
- IEC 60529 IP30 rated safety protection.
- No need to process the end of cable and no specialty tool needed.
- Fit for IEC60947-7-1.

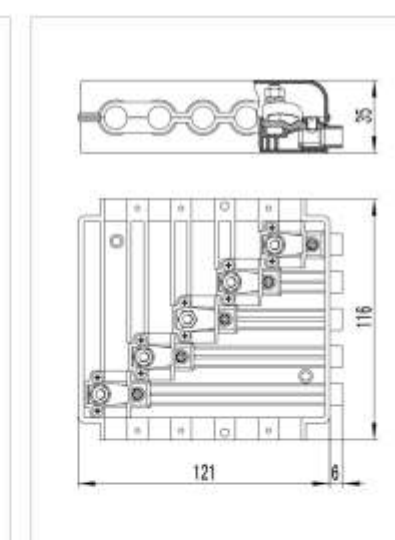
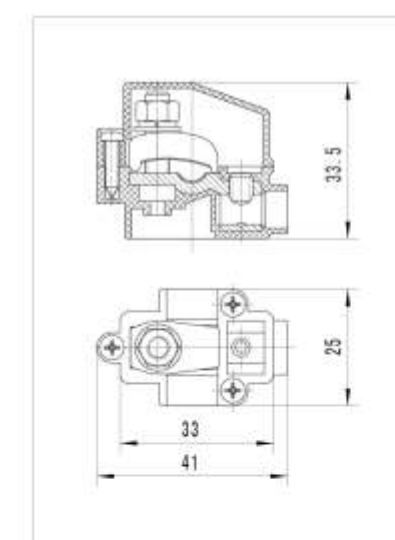
专利号: 201120147245.9  
Patent No:



XKT4-25/1

XKT4-25/5

接线型式 Wiring type	一路干线, 一路分支 one main line, one branching line	五路干线, 五路分支 five main line, five branching line
电流 Current	101	101
电压 Voltage	1000	1000
主干线截面: Main line cross-section	10~25	10~25
分支线截面: Branching line cross-section	6~16	6~16
压线螺钉 Screw	M5	M5
扭矩: Torque	2.5	2.5
订货号 Order No	XK04111	XK04115





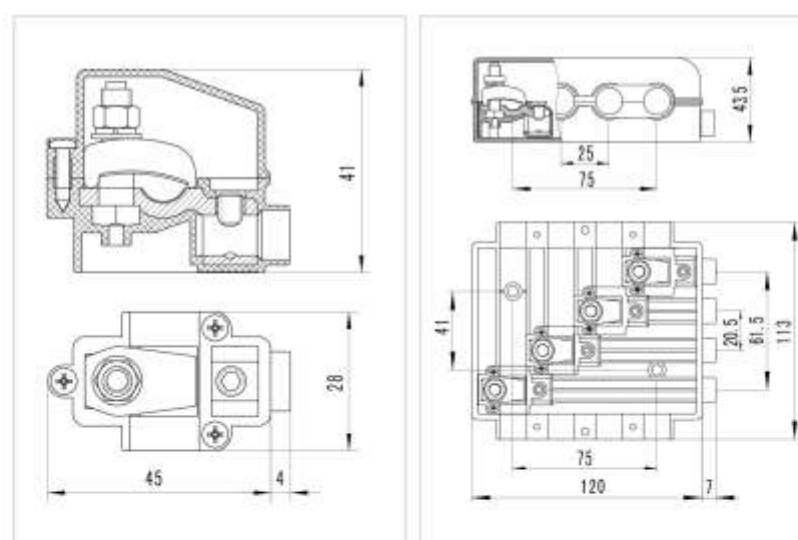


XKT4-50/1



XKT4-50/4

接线型式 Wiring type		一路干线, 一路分支 one main line, one branching line	四路干线, 四路分支 four main line, four branching line
电流 Current	A	150	150
电压 Voltage	V	1000	1000
主干线截面: Main line cross-section	mm <sup>2</sup>	35~50	35~50
分支线截面: Branching line cross-section	mm <sup>2</sup>	10~25	10~25
压线螺钉 Screw		M6	M6
扭矩: Torque	N·m	3.5	3.5
订货号 Order No		XK04211	XK04214



## TD28型等电位接线盒 TD28 JUNCTION BOX

产品主要用作住宅楼内卫生间及医院病房等作局部等电位连接之用。为嵌入式安装,在土建完成后首先将底盒预先埋入墙体并接入扁钢,待住房装修时,再将浴缸、水龙头、毛巾架等金属装饰件通过导线依次与等电位接线端子连接,装修完毕后装上盒盖即可。



Equipotential connection technique is widely used in constructions projects. According to the statistical of abroad electric accidents, the main reason of short circuit which happened in low pressure system are the connect between live wire and its cover, the structure problem of metal tubes and the fault of grounding(grounding short circuit).The fault voltage of those equipment covers, tubes and the grounding could easily lead to shocks and fire accidents. But this Equipotential could reduce and even remove the fault low voltage, and the effect is much better than simple grounding. The IEC standard IEC60364-4-41 stipulates this equipotential technique as the basic electric safety requirements.

TD28 equipotential box is made for this technique. It's easy to install and provides reliable connection. Mostly used in bathroom ground connection.

专利号: 03229023.3 03327940.3 03327941.1  
Patent No: 03229023.3 03327940.3 03327941.1

主要技术参数:  
Spec:

接入扁钢尺寸: 4x25  
Input Steel Size:

连接导线: 6x6mm<sup>2</sup>  
Connecting Cable:

订货号: XK08111  
Order No:

